



Eco Air Pump OWNER'S MANUAL



Installation Safety Instructions

WARNING DISCONNECT FROM POWER when extracting the pump when submerged in the water or prior to carrying out work on the unit.

Installation

Set up the unit horizontally in a dry location.

Install the unit above the water level or damage can occur with the returning water flow.

(Damage resulting from incorrect installation will void the warranty)

Never install or operate the unit in the vicinity of highly flammable or explosive materials.

When the unit is switched off for several hours, condensation can form on the inside of the unit, therefore for interval operation, set up the unit in a closed room at room temperature.

At high air humidity, the metal components on the inside of the unit can easily corrode. This is a normal occurrence and not a basis for a claim within the framework of the guarantee or warranty.

To switch on - connect the power plug to the socket. The unit switches on immediately when the power connection is established.

To switch off - disconnect the power plug.

Remedy of faults

Malfunction	Cause	Remedy
Unit does not run	No mains voltage or fuse	Check mains voltage, fuse
The unit does not deliver any air or the amount delivered is insufficient	The regulating valves are completely or partially closed	Open the regulating valves
	The regulating valves are soiled	Clean the regulating valves
	The aeration stones are soiled	Clean the aeration stones
	The air filter is soiled	Replace air filter
Unit is unusually loud	Membrane defective	Replace membranes
	Valve unit or membrane defective	Replace valve unit or membrane

Maintenance and Cleaning

WARNING DISCONNECT FROM POWER

To replace air filter: Remove protective cover (Figure A, 8), Remove and replace air filter (9). Refit protective cover (8) and let it engage

Replace membranes:

Never operate the unit with defective membranes. Even when only one membrane is defective, always replace the complete pair. The procedure is identical (figure A-D). Please contact your specialist dealer if you do not wish to undertake the replacement yourself.

Undo screws (10) and remove the upper section of the housing (11) from the bottom section of the housing (12).

Undo screws (14) on valve unit (15), lay the screws aside separately from the other screws.

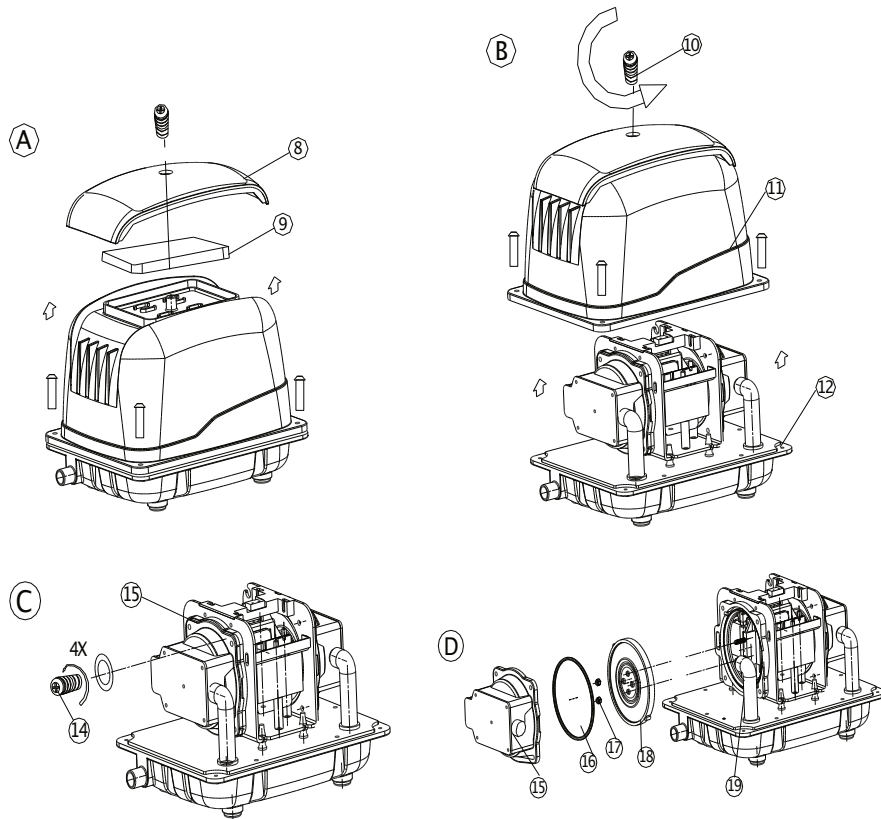
Move the fixed-ring (16) to the side.

Remove screw (17) press on packing leather-holder (19) to release it out of packing leather (18)

Insert new membrane(s)

Reassemble the unit in the reverse order.

Air filters, valve unit and membranes are wear parts and, therefore, are not covered by our warranty.



1. Ensure that the power voltage and frequency to be utilized conform to the power requirements specified on the product nameplate before use. Use a standard AC outlet.
2. This unit should be earthed while in use to protect the operator from electric shock.
3. During operation do not touch the lower housing with your hands, CAUTION HOT.
4. If the unit falls into the water, unplug the unit and then retrieve it. Let qualified technicians check your unit.
5. Carefully examine the appliance after installation, if the supply cord is damaged, it must be replaced by the manufacturer or its service agent or similarly qualified person in order to avoid a hazard.
6. The unit is to be supplied through a residual current device (RCD) having a rated residual operating current not exceeding 30 mA.

During operation, if the sound is interrupted or anything abnormal occurs, immediately unplug the power cord from the outlet and contact your dealer or an authorized service center.

The JET-STREAM™ Eco Air pumps (in the following termed “unit”) are carefully inspected and tested to ensure both safety and operating performance. However, failure to follow the instructions and warnings in this manual may result in pump’s damage and/or serious injury. Be sure to read and save this manual for future reference.

The Features of this latest technology product are, energy saving, quiet and safe. It’s also used for air supply spare parts of air bed, vacuum packaging, medical equipment, septic tank sewage disposal system, industry and environmental protection.

Features

- Adopts high-grade aluminium alloy to shape the case, double damping system and noise absorbing function, high performance and low in noise.
- Double air chambers to produce a large quantity of air and strong air pressure.
- Mon-oil lubricated design to provide pure compressed air.
- Unique structure, quick in heat dissipation.
- Complete waterproof structure.

1. PIPE DIVIDER & AIR STONES CONNECTION

One or more air stones can be connected to the unit outlet with a pipe & an air divider. Choose an air pipe that suits your installation. Ensure all pipes are secured with clips when installing the air pump. Using larger bore pipe and avoiding sharp bends will improve performance of this air pump. Use new and sufficiently large air stones with enough discharge capacity. Place them no deeper than 3 m in the pond. Bends in the air pipe, air stones placed too deep, air stones that are too small, old or dirty air stones etc will reduce its capacity. While operating, never fully close off the pump outlet. Ensure that the pump can discharge sufficient air all the time, otherwise the pump will heat up, leading to damage. To prevent any water flowing back into the pump when powered off it is advisable to install the pump above water level. If a non-return valve is used on the outlet pipe, the pump may go beneath the waterline. To guarantee a long service life, it is necessary to install the pump in dry conditions, no moisture or dust. Dirt and moisture can seriously shorten the service life of this pump. Please note that an ambient temperature above +40°C can cause the diaphragm to crack.

DISASSEMBLY & REASSEMBLY THE DIAPHRAGM

Make sure to unplug the pump before replacing diaphragm. Loosen the screws, take off the air chamber cover, loosen off the nut, take off separately the diaphragm depressor, electrostatic membrane & diaphragm, replace with a new diaphragm, make sure the diaphragm's nut fits exactly to the slot of the air chamber and install all the parts back by counter steps.

FILTER SPONGE CLEANING & REPLACEMENT

Any dust or foreign matter attached on the pump air inlet may cause abnormal noises or result in a failure of the pump. The following are filter sponge cleaning & replacement instructions.

Unplug the pump before any cleaning or replacement work is carried out. Remove the filter sponge from the air inlet. At this time, remove any dust or foreign matter from the air inlet, the filter cover and the filter sponge mounting surface. If the sponge is heavily soiled, a piece of new sponge is needed, or you can use a neutral detergent to wash the old sponge. To wash the sponge down, remember to rinse it well with water. Be sure to completely dry it before reinstalling.

DISPOSAL:

This product must not be disposed together with the domestic waste. This product has to be disposed at an authorized place for recycling of electrical and electronic appliances.

Ensure the product is disposed in an environmental friendly and healthy way.

Technology data:



Model	Input Voltage (V)	Frequency (Hz)	Rated Power (W)
JET-35	AC 220-240V	50Hz	20
JET-45			25
JET-65			38
JET-80			55
JET-100			65
JET-150			125
JET-200			210

AHS SYSTEMS LTD.

UNIT 2, OAKHURST BUSINESS PARK, SOUTHWATER, WEST SUSSEX,
RH13 9RT

Email: sales@alienhydroponics.co.uk Website: alienhydroponics.co.uk

Tel: +44 (0) 1403 888276